

RAIL-CLEAN



Environmental protection in railway applications

- Reloading systems
- Locomotive parking areas
- Washing equipment
- Locomotive refuelling stations



Certification of compliance
with the stipulations of water legislation
(NLÖ – 19h –98/03)

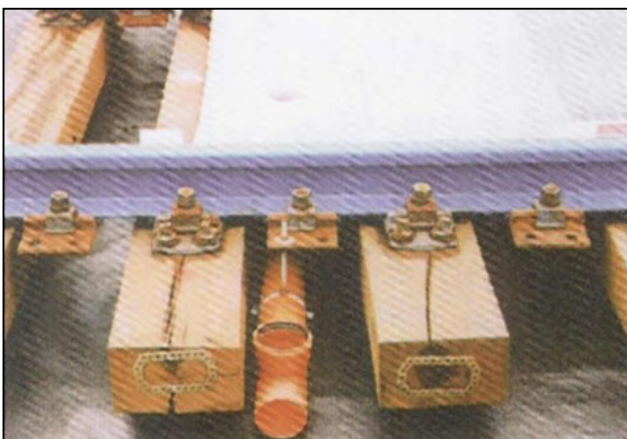
Economic, because it is not designed for a specific type of superstructure

Light • Stable • Safe • Fast to install

RAIL-CLEAN helps to protect the environment



Ideas & experience



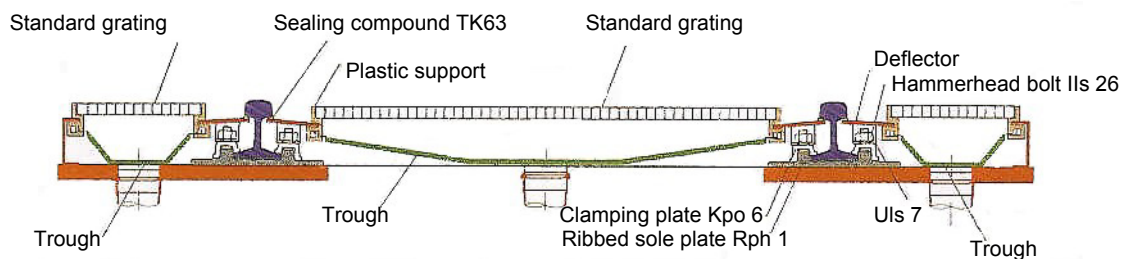
Stricter environmental regulations and increasingly demanding liability requirements on operators are making it more and more essential to find solutions to environmental protection problems.

Situations that can lead to soil contamination occur in the operations needed to run railway transport systems. You as the operator are therefore right to demand that it is possible

- to refuel, wash and park passenger and goods trains and
- to reload liquids, such as oil and chemicals

without endangering nature and the environment.

A track bed coverage system must therefore be able to guarantee that no oil, chemicals, diesel fuel, cleaning agents and any other harmful substances can get into the soil. The Environmental Authorities of the State of Lower Saxony in Germany have certified that the **RAIL-CLEAN** system which has been specially designed for applications of this kind complies with the stipulations of water legislation (NLÖ – 19h – 98/03) and therefore observes the relevant standards.



Practical environmental protection systems do, however, need to be economically viable: **RAIL-CLEAN** is therefore compatible with all types of superstructure and sleepers as well as with all widths and lengths. It consists of edged, trough-like sheet-metal profiles that are suspended on galvanised support plates and elements between the tracks and to the side of them with the help of moulded plastic parts. The system is designed to eliminate the need for any holes to be drilled in the rails and sleepers. Plastic brackets make sure that the track is insulated effectively. In order to guarantee that the system can be walked on in accordance with the provisions of the German UVV regulations for the prevention of accidents, the whole of the trough structure is covered by galvanised grating.

The **RAIL-CLEAN** system can be connected to any standard drainage system before which an oil or chemical trap has been installed.

Economic, because it is not designed for a specific type of superstructure

Light • Stable • Safe • Fast to install

RAIL-CLEAN helps to protect the environment



FRENZEL-BAU GmbH & Co. KG
Alter Sonnenbergweg 4 • D-31084 Freden Leine
Telefon + 49 (05184) 9939-0 • Telefax + 49 (05184) 9939-39
Email info@frenzel-bau.de • Internet www.frenzel-bau.de

